

## Introduction to Citymain

Citymain were the pioneers of the cellular telephone insurance policy when, at the launch of cellular in the UK in January 1985, we arranged the first programme for Motorola with Lloyd's of London. Involvement with BT Cellnet, Vodafone, One2One and a large percentage of UK retailers has ensured Citymain has kept in the forefront of mobile phone insurance. We are proud to be handling the largest customer base for mobile phone insurance in the UK.



## The Mobile Phone Insurance Policy

### The Free Period

All customers opting for insurance will be entitled to an initial period of cover totally free of charge. The customer can keep their policy for as long as they like. There is no minimum period.

Coverage	Handset Value	Excess
<b>Accidental Damage</b> <b>Liquid Damage</b> <b>International Cover</b> <b>Theft</b> <b>Extended Warranty</b>	<b>All Values</b>	<b>GSM = £25</b> or <b>3G = £50</b>

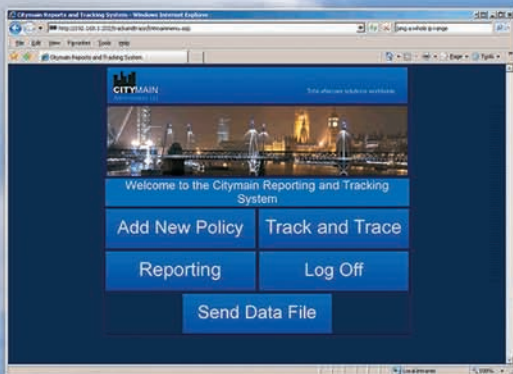
### The Price

The mobile phone insurance policy outlined above can be sold by the dealer for either £5.99 or £6.99 per month. The dealer must decide in advance which price they wish to offer.

Customer Monthly Premium	Dealer Monthly Commission
<b>£5.99</b>	<b>Please Contact Us</b>
<b>£6.99</b>	

### The Reporting

Citymain's web-based Track & Trace system offers real time reporting of new policies sold, cancellations and dealer commissions.



## New Product - Driving Ban Assistance

We are all human; with the variety of different speed limits and enforcement cameras on our ever expanding road network we can all become confused of the imposed speed restrictions. Even the most safety conscious driver can have a momentary lapse of concentration and get flashed!

Citymain's Driving Ban Assistance policy provides comprehensive protection in the event of a licence being lost through the accumulation of penalty points and will reimburse the holder the cost of alternative transportation up to £1,000 per month, for a maximum of 6 months.



Current Points	Customer Monthly Premium	Dealer Monthly Commission
<b>0 - 6</b>	<b>£5:99 per month</b>	<b>£1.65 per month</b>
<b>7 - 11</b>	<b>£14:99 per month</b>	<b>£4.50 per month</b>

PO Box 116, Ryde, Isle of Wight PO33 2WX  
 Tel: **0870 066 2115** Fax: **0870 444 2633**  
 Email: **info@citymain.com** Website: **www.citymain.com**